

GENERAL RULES

TO BE OBSERVED AT

STONEWOOD PAPER MILL

1. The Working Hours for all, except Shiftmen, shall be from 6 a.m. to 6 p.m. Breakfast Hour, from 9 a.m. to 10 a.m.; and Dinner Hour, from 2 p.m. to 3 p.m. On Saturdays, Working Hours, from 6 a.m. to 2 p.m.; Breakfast Hour, from 9 a.m. to 10 a.m.
2. The Working Hours for Shiftmen shall be from 6 a.m. to 6 p.m.; commencing on Monday morning at 6 a.m., but terminating at 11 p.m. on Saturday.
3. All Workers are required to attend at the Mill at any time, when requested to do so.
4. No Shiftman is allowed to leave his work until relieved by the person whose duty it is to do so, or by some one appointed for the purpose.
5. All Workers, on entering the Mill, shall receive a Ticket at the Gatehouse, and hand it in on leaving. Each worker must lift and hand in his or her own Ticket.
6. Time-workers coming in from five to ten minutes late, shall have one Quarter-hour deducted from their time; and from ten to fifteen minutes late, one Half-hour deducted from their time. Workers more than fifteen minutes late may not enter the Mill until after the following interval.
7. A fortnight's warning must be given by workers before leaving, otherwise all wages due at the time shall be forfeited.
8. A fortnight's warning to workers may be dispensed with, and immediate dismissal, with forfeiture of all wages due at the time, may follow the undermentioned offences :-
 - (1) Failing to attend at the Mill when requested to do so, except in cases of sickness.
 - (2) Being under the influence of intoxicating liquor while on duty; failing to attend when required, owing to the influence of intoxicating liquors; or bringing intoxicating liquors into the Mill.
 - (3) Damaging or wasting the Mill property, machinery, tools, paper, stores, &c. In addition to the above punishment, workers shall be liable for the amount of damage or waste committed.
9. Window glass broken through carelessness will be charged against the workers in department.
10. No Worker shall leave the department in which he or she is employed, unless in discharge of duty.
11. No Worker allowed to communicate with Strangers during working hours, or to bring Strangers into the Mill without first asking and obtaining permission from the Manager.
12. No smoking allowed within the Mill premises.
13. No carelessness or laziness at work.
14. No swearing or unruly conduct.
15. No Worker shall enter or leave the Mill premises except by the gate appointed for that purpose.

JOHN COLLINS.

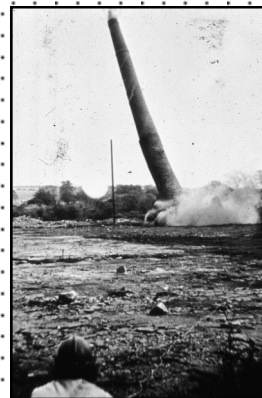
NOTE.

Careless, lazy, or drunken workers are not wanted at Stoneywood Paper Mill. Good, careful, and honest workers may expect to be liberally dealt with.

August 12th, 1887.

John Mathie, Printer, Denny.

The Heritage Rooms at 13 Milton Row in Dunipace have seen great improvement in 2009. Volunteers of Denny & Dunipace Heritage Society and Community Green Initiative have spent many months of Sunday mornings stripping, painting, hanging new window blinds (thanks to funding from Denny Rotary Club), scrubbing and polishing. The council rewired the premises and put in a long overdue new kitchen. Our grant from Heritage Lottery Fund will help with internet access and proper archival and display materials for historic artefacts. Refurbishments will continue as this "new old" community meeting space is regenerated. The main room is available for group meetings for a donation while DDHS and CGI share the office space. Contact Stewart Johnston on 822827 for more information.



Truly the End of an Era...

(L) Demolition of chimney at Vale Paper Works Dunipace/Denny Circa 1910-1936
Courtesy Callendar House Library



(R) Demolition of chimney at site of former Carrongrove Paper Mill November 2009

"When an elder dies, it is as if an entire library has burned to the ground." ~ African Saying